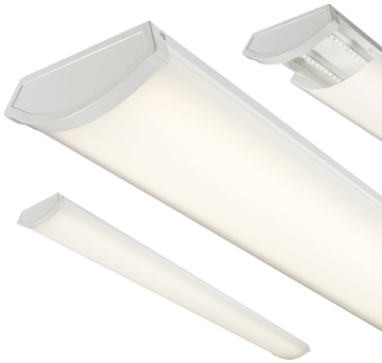


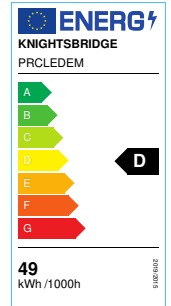
DATASHEET



PRCLEDEM

230V IP20 5ft 49W LED Surface mount- emergency

www.mlaccessories.co.uk



MLA PART CODE	PRCLEDEM
DESCRIPTION	230V IP20 5ft 49W LED Surface mount- emergency
NET WEIGHT (KG)	3.39
FINISH	White
DIFFUSER	Opal
DIMENSIONS (MM)	Length - 1490 Width - 198 Projection - 68
CONSTRUCTION	Construction - Pressed steel Construction 2 - & polycarbonate
CLASS	I
IP RATING	IP20
WATTAGE (W)	49
LAMP TECHNOLOGY	LED
LAMP INCLUDED	Yes
LUMENS (LM)	6110
LUMENS LIGHT SOURCE ONLY (LM)	7750
LUMEN TOLERANCE	5%
EFFICACY (LM/W)	155
LUMENS EMERGENCY MODE (LM)	600
CIRCUIT WATTAGE (W)	50.5
CCT	4000K
LIGHT COLOUR	Cool White
CRI	>80
SDCM	<6
RUNNING CURRENT (A)	0.228
DISPLACEMENT FACTOR	>0.9
SVM	0.81
PST-LM	0.037
BEAM ANGLE (DEGREES)	120

LIFE SPAN (HRS)	30,000
L70B50 LIFESPAN (HRS)	50,000
DIMMABLE	No
EMERGENCY	Maintained / Non-maintained / Switched
OPERATING TEMPERATURE	-15~45°C
INPUT VOLTAGE	230V 50Hz
DRIVER	DRIVER TYPE - Constant Current MAX. OUTPUT - 50W OUTPUT VOLTAGE - 29-43V OUTPUT CURRENT - 1200mA POWER FACTOR - 0.95 EFFICIENCY FULL LOAD - 88.76 ISOLATION - SELV AMBIENT TEMPERATURE (Ta) - -15~45°C CASE TEMPERATURE (Tc) - 70°C
BATTERY TYPE	Ni-Cad
BATTERY INCLUDED	Yes
WARRANTY	5year(s)
WARRANTY INFORMATION	(excluding battery)
MANUFACTURED IN ACCORDANCE WITH	BS EN 60598
ORIGIN OF MANUFACTURE	China
DECLARATION OF CONFORMITY (HELD ON FILE)	Yes
EAN	5055832973935

Date Created: 27/02/2025 11:51

