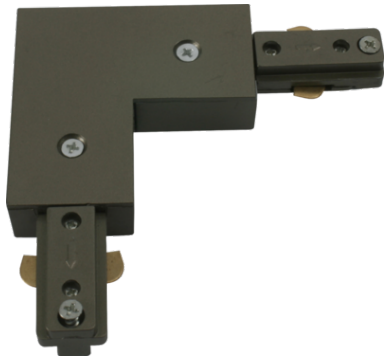


DATASHEET



TRKRA1S

230V Track L Right Angle Connector - Satin Nickel

www.mlaccessories.co.uk

MLA PART CODE	TRKRA1S
DESCRIPTION	230V Track L Right Angle Connector - Satin Nickel
NET WEIGHT (KG)	0.105
FINISH	Satin Nickel
DIMENSIONS (MM)	Length - 108 Height - 18 Width - 35 Projection - 18 Overall Height - 18
CONSTRUCTION	Construction - Polycarbonate Construction 2 - & copper
CLASS	I
IP RATING	IP20
INPUT VOLTAGE	230V 50Hz
WARRANTY	2year(s)
MANUFACTURED IN ACCORDANCE WITH	BS EN 60598
ORIGIN OF MANUFACTURE	China
DECLARATION OF CONFORMITY (HELD ON FILE)	Yes
EAN	5056270823011

Date Created: 27/02/2025 16:34

