



SUPPLIED BY:

(UK) MANUFACTURER
ML ACCESSORIES LTD, UNIT E CHILTERN PARK,
BOSCOMBE ROAD, DUNSTABLE LU5 4LT,
WWW.MLACCESSORIES.CO.UK

(EU) AUTHORISED REPRESENTATIVE
SLV LIGHTING GROUP,
DAIMLERSTRASSE 21-23,
52531 ÜBACH-PALENBERG, GERMANY
EMAIL: EPREL@GROUP.SLV.COM

MADE IN CHINA



HWSEP23_V1

Knightsbridge

Manufacturers Declaration of Conformity
For ML Accessories (Knightsbridge)
Electrical products in accordance with UKCA marking

ML Accessories Ltd. declare that all products have been designed, manufactured, and tested in accordance with the requirements of the relevant legislation

UKCA marking legislation

UK SI 2016 No. 1091	Electro Magnetic Compatibility Regulations 2016
UK SI 2016 No. 1101	The Electrical Equipment (Safety) Regulations 2016
UK SI 2012 No. 3032	Restriction of the use of Certain Hazardous Substances in Electrical and Electronic Equipment Regulations 2012
UK SI 2017 No. 1206	Radio Equipment regulations 2017
UK SI 2021 No. 1095	The Ecodesign for Energy-Related Products and Energy Information (Lighting Products) Regulations 2021

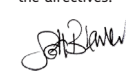
Included Legislation

UK SI 2008 No. 2852	UK REACH
UK SI 2013 No. 3113	WEEE

Safety Standards

Full individual declarations and specific safety standards applicable to relevant product series can be found on our website www.mlaccessories.co.uk

We hereby declare that the equipment named above has been designed to comply with the relevant sections of the above referenced specifications. The products comply with all essential requirements of the directives.



Scott Brewer
Head of Technical



Catherine Connolly
CEO



ML Accessories Ltd. Unit E Chiltern Park, Boscombe Road, Dunstable. Bedfordshire, LU5 4LT

This declaration becomes invalid if technical or operational modifications are introduced without ML Accessories Ltd. written consent.

Knightsbridge

Manufacturers Declaration of Conformity
For ML Accessories (Knightsbridge)
Electrical products in accordance with CE marking

ML Accessories Ltd. Declare that all products have been designed, manufactured, and tested in accordance with the requirements of the relevant legislation

CE marking legislation

In Accordance with the following Directives:

2014/35/EU	Low Voltage Directive
2014/30/EU	EMC Directive
2014/53/EU	Radio Equipment Directive

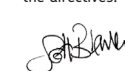
Including Legislation

1907/2006	REACH
2015/863	RoHS
2021/341	ERP

Safety Standards

Full individual declarations and specific safety standards applicable to relevant product series can be found on our website www.mlaccessories.co.uk

We hereby declare that the equipment named above has been designed to comply with the relevant sections of the above referenced specifications. The product complies with all essential requirements of the directives.



Scott Brewer
Technical Manager



Catherine Connolly
CEO



ML Accessories Ltd. Unit E Chiltern Park, Boscombe Road, Dunstable. Bedfordshire, LU5 4LT

This declaration becomes invalid if technical or operational modifications are introduced without ML Accessories Ltd. written consent.



INSTALLATION & MAINTENANCE MANUAL

SK0016



GENERAL INSTRUCTIONS

These instructions should be read carefully and retained after installation by the end user for future reference and maintenance.

These instructions should be used to aid installation of the following product:
SK0016

SAFETY

- This product must be installed in accordance with the latest edition of the IEE Wiring Regulations (BS7671) and current Building Regulations. If in any doubt, consult a qualified electrician
- Check the total load on the circuit (including when this product is fitted) does not exceed the rating of the circuit cable, fuse or circuit breaker.
- Please note the IP (Ingress Protection) rating of this product when deciding the location for installation
- Do not overload this accessory or subject it to conditions outside its rating
- This product is Class I and must be earthed.
- This product is for indoor use only.
- This product is IP20 rated.

INSTALLATION

- Note – The unit should be fixed to a rigid flat surface as unevenness could cause damage to the product or affect operation. The selected surface for installation must be at least 10mm thick.
- The product is designed to fit into standard sized office desk cut-outs of 80mm without the need to cut further holes.
 - Ensure there is sufficient space beneath the surface when the product is in the closed position.
 - Cut a suitable hole in the mounting surface as per the cut-out details. (See Fig. 1)

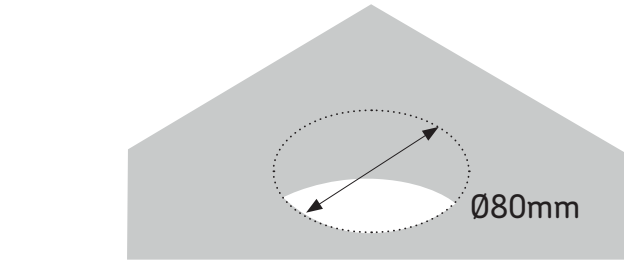


Fig. 1

- Remove the lock ring, insert the product through the hole and secure the lock ring onto the underside.

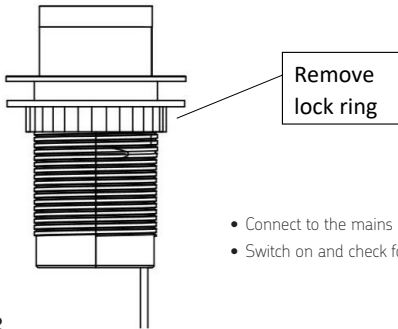


Fig. 2

- Connect to the mains power supply via the pre-wired cable and plug.
- Switch on and check for correct operation.

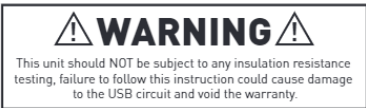
USB CHARGING FUNCTION

This product is designed for charging portable USB devices only and contains a short circuit and overload protection feature. If there is no power from the USB socket unplug the connected device. Check to ensure the USB socket and USB device have not come into contact with water, liquid or debris and the cable to the device is not damaged. With no device connected to the USB socket it will automatically reset and be ready for use.

WARNING

This product must be disconnected from the circuit if subjected to any high voltage or insulation resistance testing. Irreparable damage will occur if this instruction is not followed.

USB or Bluetooth products, dimmers, shaver sockets and products with LED or neon indicators must be disconnected from the circuit if subjected to any high voltage or insulation resistance testing. Irreparable damage will occur if this instruction is not followed. Please note this kind of damage will void the warranty.



Please note that we do not recommend our 13A sockets be used for Electric Vehicle (EV) charging for prolonged periods.

GENERAL

This product should be recycled in the correct manner when it reaches the end of its life. Check local authorities for where facilities exist.

Clean with a soft dry cloth only, do not use aggressive cleaning products or solvents which may damage the product.

WARRANTY

This product has a warranty of 1 year from date of purchase. Failure to install this product in accordance with the current edition of the IEE Wiring Regulations (BS7671), improper use, or removal of the batch code will invalidate the warranty. If this product should fail within its warranty period, it should be returned to the place of purchase for a free of charge replacement. ML Accessories does not accept responsibility for any installation costs associated with the replacement product. Your statutory rights are not affected. ML Accessories reserve the right to alter product specification without prior notice.